

MILLBURN MAGIC

Press Release



Millburn, NJ, April 9th 2009

Key Players to Return for the Magic

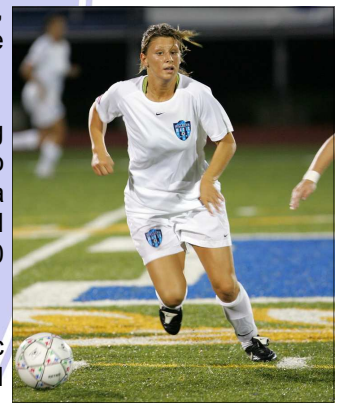
The Millburn Magic are pleased to report many key players from the inaugural 2008 season will return to help the team fight for a playoff position in 2009. These returning players, in many cases coming from successful college seasons, will be joined by top level international and local players to complete the Magic's roster.

Lia Fierro, the Magic's standout GK and captain, returns after 8 shut outs this season helped the 3rd ranked Monmouth University Hawks reach the semi-finals of the Northeastern Conference tournament. Fierro, consistent throughout the 2008 season for the Magic, was a star at Millburn High School and still holds the school and Essex County shutout record with 49. Fierro's Monmouth teammate Kim Malecki will also return to Millburn this summer where her goals will be crucial to the teams success. Both Fierro and Malecki were apart of the five time state cup winning PDA Fury side that reached the National Championship in 2005.

Providence College's Kaitlin Blaine and Tara Ricciardi will return to the Magic after representing the Friars in Big East play. After an outstanding season at Providence, the Magic will be hoping Ricciardi can continue that form, leading and driving the team forward from midfield. Central defender Blaine was outstanding for the Magic in 2008, anticipating play and initiating attacks from the back. Lining up alongside Blaine in defense will be Ashley Ventura, who started every game for Towson University this past season. Ventura is a consistent and aggressive left sided player who's pace also provides an attacking threat. Chrissie Sidie returns to the Magic after enjoying a particularly successful season at Fairfield University. An emphatic 3-0 victory over Magic teammate Lina Staropoli and Loyola College in the MAAC Conference final saw the Stags reach the NCAA tournament for only the fifth time in their history. Sidie, an intelligent distributor of the ball who can control play from the middle, reunites with Staropoli - a strong midfielder with a cultured left foot who was named to the MAAC All-Rookie Team in her freshmen year.

Lara Kaminski, one of the Magic's most influential players in 2008 is the final returning player for the 2009 campaign. The all action center midfielder, recently transferred to Kean University, was a key player for the Magic in their early games, before a season-ending injury cut short her debut WPSL campaign. The two-time NJAC All-Second Team selection will again be looking to provide energy & inspiration throughout the 10 coming season.

"Securing the return of key players is a great base for us to build on" comments Magic Head Coach Andy Sones. "These players were the core of our successes in 2008, and I have no doubt that they will help lead us to greater things this year." With the remainder of the squad to be announced shortly, the Magic are close to completing preparations for their opening game of the 2009 campaign at home to the Delaware Future on May 17.



Kaminski in action for the Magic

The Millburn Magic is the Northern NJ member of the Women's Premier Soccer League, an independent national league representing the highest level of amateur soccer in the United States. As an amateur league, our players are typically playing with high level college programs through the fall, and play with us from the middle of May through the start of August. The team plays in the East Coast Conference, with the five regional conference winners from around the country playing-off for the National Championship. The Millburn Magic are part of the New Jersey Soccer Group, a management company for a family of soccer based organizations offering a full range of soccer services in New Jersey.

More about the Millburn Magic at
More about the WPSL at

www.millburnmagic.com
www.wpsl.info/



Millburn Magic
374 Speedwell Ave
Morris Plains, NJ
07950

www.millburnmagic.com
info@millburnmagic.com
Phone: 973-315-3098
Fax: 973-315-3104